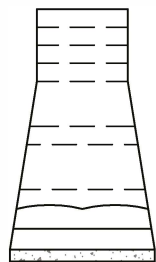
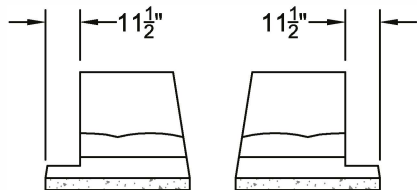


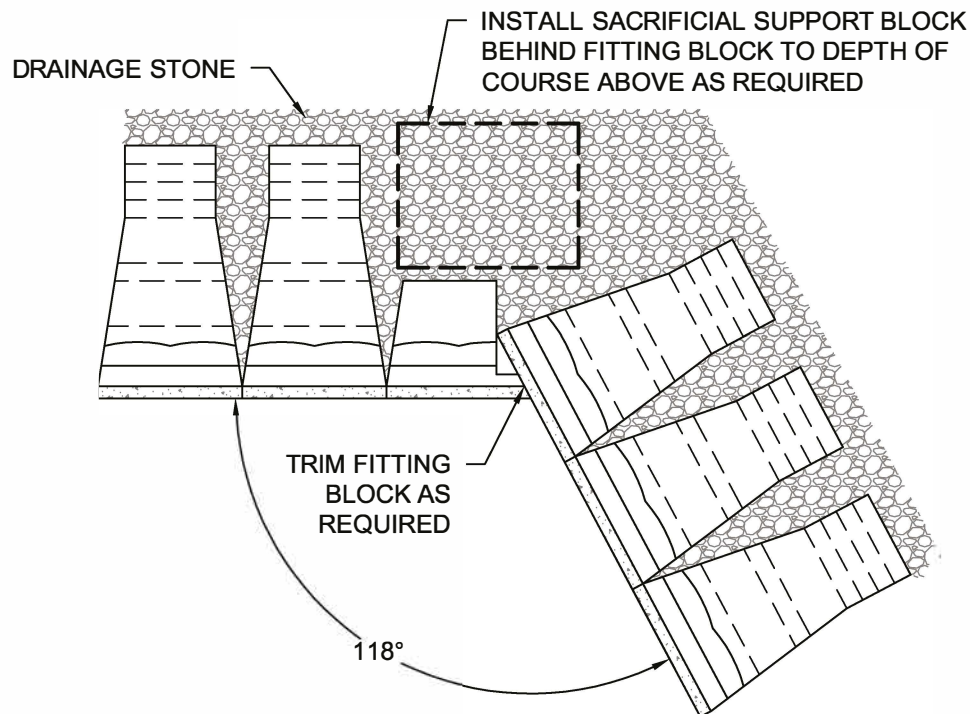
### ODD ROW



MIDDLE/BASE BLOCK  
(24" THROUGH 84")



FITTING BLOCK  
(24" OR 39" - LEFT OR RIGHT)



### EVEN ROW

NOTE: THE MAXIMUM ANGLE OF 118 DEGREES, AS SHOWN, IS BASED UPON A FITTING BLOCK RECESS OF 11.5" (29 CM) FROM THE OUTSIDE OF THE BLOCK. IF A GREATER ANGLE IS REQUIRED, THEN EITHER (A) THE RECESS ON THE FITTING BLOCK MUST BE INCREASED OR (B) SOME LOSS OF RUNNING BOND AT THE OBLIQUE CORNER MUST BE ACCEPTABLE.

© Copyright 2016 ReCon Wall Systems, Inc. All Rights Reserved

Disclaimer: This drawing has been prepared by ReCon Wall Systems, Inc. and to the best of its knowledge, accurately represents the product use in the application that it is illustrated. This drawing is intended for conceptual purposes only. Anyone making use of this drawing does so at their own risk and assumes all liability for such use. Final design for construction purposes must be completed by a Registered Professional Engineer who is familiar with the product and who has taken into account specific site conditions.



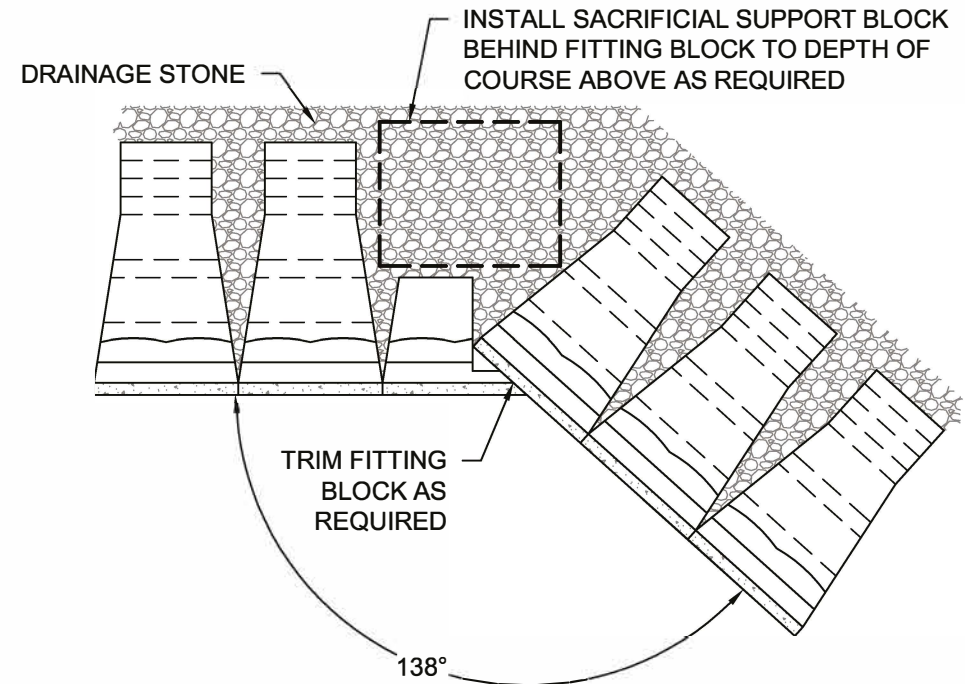
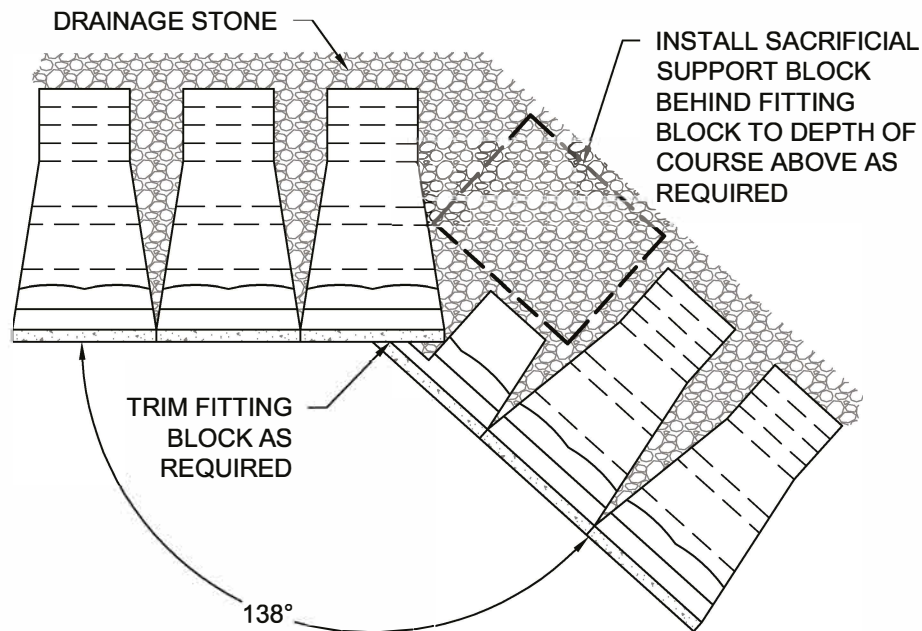
Retaining Walls by CBS Beton

**DRAWING #201**

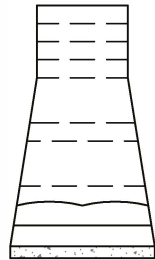
## OBLIQUE INSIDE CORNER - STANDARD

**ReCon Walls by CBS beton**

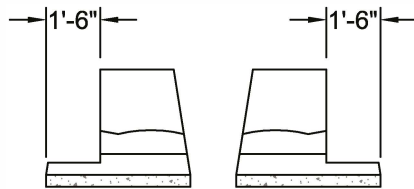
Hooimeersstraat 8, 8710 Wielsbeke.  
t +32 (0)56 60 50 37 - F +32 (0) 56 61 75 39  
Info @reconwallsbycbsbeton.com



### ODD ROW



MIDDLE/BASE BLOCK  
(24" THROUGH 84")



FITTING BLOCK - **SPECIAL**  
(24" OR 39" - LEFT OR RIGHT)

### EVEN ROW

NOTE: THE MAXIMUM ANGLE OF 138 DEGREES, AS SHOWN, IS BASED UPON A FITTING BLOCK RECESS OF 18" (46 CM) FROM THE OUTSIDE OF THE BLOCK. IF A GREATER ANGLE IS REQUIRED, THEN EITHER (A) THE RECESS ON THE FITTING BLOCK MUST BE INCREASED OR (B) SOME LOSS OF RUNNING BOND AT THE OBLIQUE CORNER MUST BE ACCEPTABLE. CHECK WITH LOCAL RECON PRODUCER FOR AVAILABILITY OF THE SPECIAL FITTING BLOCK.

© Copyright 2016 ReCon Wall Systems, Inc. All Rights Reserved

Disclaimer: This drawing has been prepared by ReCon Wall Systems, Inc. and to the best of its knowledge, accurately represents the product use in the application that it is illustrated. This drawing is intended for conceptual purposes only. Anyone making use of this drawing does so at their own risk and assumes all liability for such use. Final design for construction purposes must be completed by a Registered Professional Engineer who is familiar with the product and who has taken into account specific site conditions.



Retaining Walls by CBS Beton

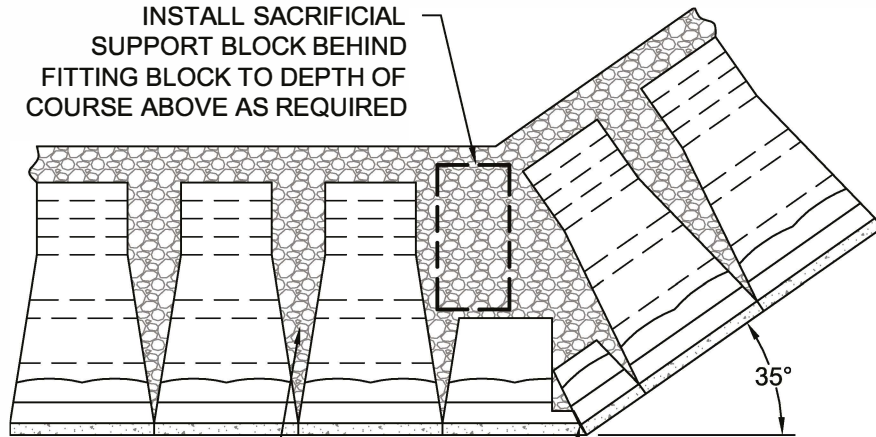
**DRAWING #202**

## OBLIQUE INSIDE CORNER - SPECIAL

ReCon Walls by CBS beton

Hooimeersstraat 8, 8710 Wielsbeke.  
t +32 (0)56 60 50 37 - F +32 (0) 56 61 75 39  
Info @reconwallsbycbsbeton.com

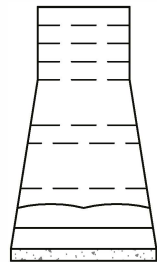
INSTALL SACRIFICIAL  
SUPPORT BLOCK BEHIND  
FITTING BLOCK TO DEPTH OF  
COURSE ABOVE AS REQUIRED



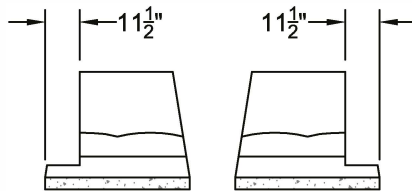
DRAINAGE STONE

TRIM FITTING  
BLOCK AS  
REQUIRED

### ODD ROW



MIDDLE/BASE BLOCK  
(24" THROUGH 84")

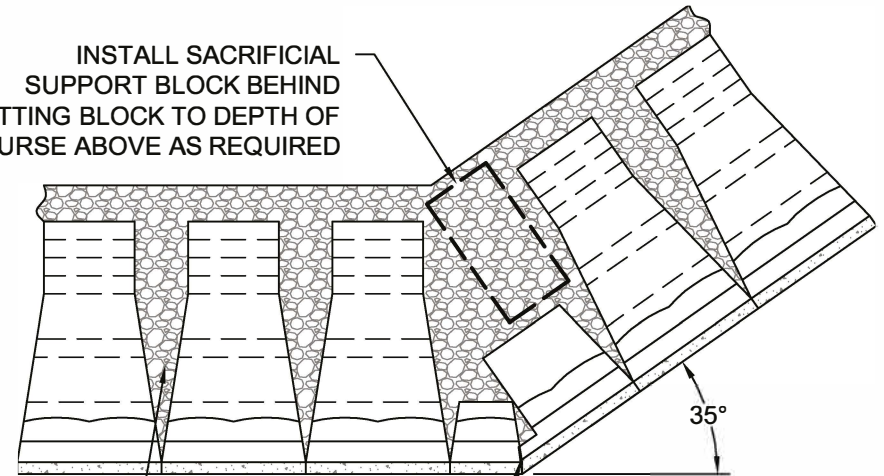


FITTING BLOCK  
(24" OR 39" - LEFT OR RIGHT)



24" MIDDLE/BASE  
HALF BLOCK  
(MAY BE CAST w/o  
TONGUE TO AVOID  
FIELD CUTTING)

INSTALL SACRIFICIAL  
SUPPORT BLOCK BEHIND  
FITTING BLOCK TO DEPTH OF  
COURSE ABOVE AS REQUIRED



DRAINAGE STONE

TRIM FITTING  
BLOCK AS  
REQUIRED

### EVEN ROW

NOTE: THE MAXIMUM ANGLE OF 35 DEGREES, AS SHOWN, IS BASED UPON A FITTING BLOCK RECESS OF 11.5" (29 CM) FROM THE OUTSIDE OF THE BLOCK. IF A GREATER ANGLE IS REQUIRED, THEN EITHER (A) THE RECESS ON THE FITTING BLOCK MUST BE INCREASED OR (B) SOME GAP BETWEEN THE TEXTURES AT THE OBLIQUE CORNER MUST BE ACCEPTABLE.

© Copyright 2016 ReCon Wall Systems, Inc. All Rights Reserved

Disclaimer: This drawing has been prepared by ReCon Wall Systems, Inc. and to the best of its knowledge, accurately represents the product use in the application that it is illustrated. This drawing is intended for conceptual purposes only. Anyone making use of this drawing does so at their own risk and assumes all liability for such use. Final design for construction purposes must be completed by a Registered Professional Engineer who is familiar with the product and who has taken into account specific site conditions.



Retaining Walls by CBS Beton

**DRAWING #203**

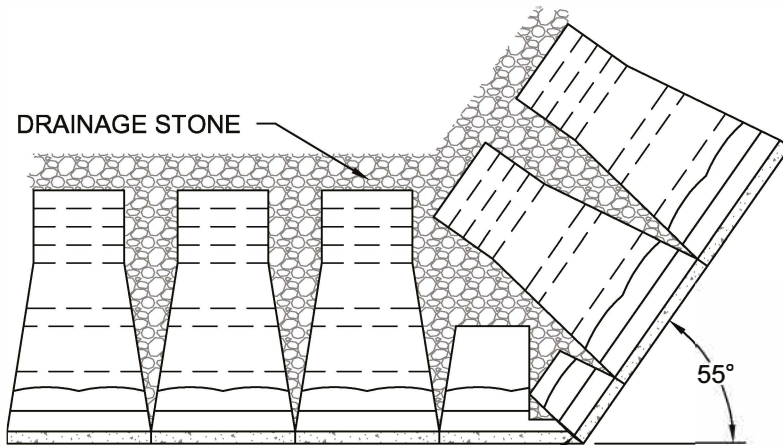
## OBLIQUE OUTSIDE CORNER - STANDARD

ReCon Walls by CBS beton

Hooimeersstraat 8, 8710 Wielsbeke.  
t +32 (0)56 60 50 37 - F +32 (0) 56 61 75 39  
Info @reconwallsbycbsbeton.com

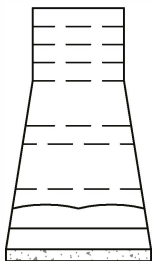


DRAINAGE STONE

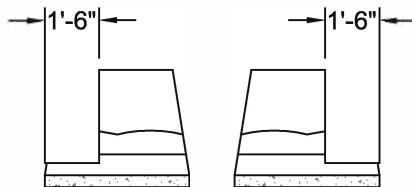


TRIM FITTING  
BLOCK AS  
REQUIRED

**ODD ROW**



MIDDLE/BASE BLOCK  
(24" THROUGH 84")

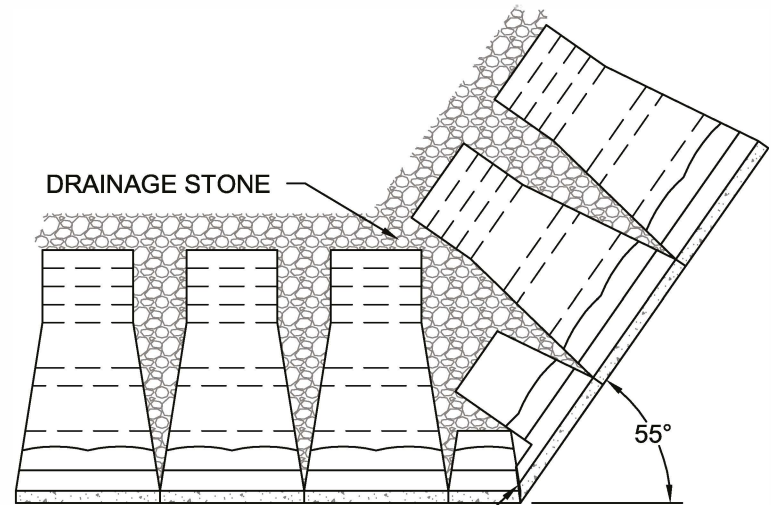


FITTING BLOCK - ***SPECIAL***  
(24" OR 39" - LEFT OR RIGHT)



24" MIDDLE/BASE  
HALF BLOCK  
(MAY BE CAST w/o  
TONGUE TO AVOID  
FIELD CUTTING)

DRAINAGE STONE



TRIM FITTING  
BLOCK AS  
REQUIRED

**EVEN ROW**

NOTE: THE MAXIMUM ANGLE OF 55 DEGREES, AS SHOWN, IS BASED UPON A FITTING BLOCK RECESS OF 18" (46 CM) FROM THE OUTSIDE OF THE BLOCK. IF A GREATER ANGLE IS REQUIRED, THEN EITHER (A) THE RECESS ON THE FITTING BLOCK MUST BE INCREASED OR (B) SOME GAP BETWEEN THE TEXTURES AT THE OBLIQUE CORNER MUST BE ACCEPTABLE. CHECK WITH LOCAL RECON PRODUCER FOR AVAILABILITY OF THE SPECIAL FITTING BLOCK.

© Copyright 2016 ReCon Wall Systems, Inc. All Rights Reserved

Disclaimer: This drawing has been prepared by ReCon Wall Systems, Inc. and to the best of its knowledge, accurately represents the product use in the application that it is illustrated. This drawing is intended for conceptual purposes only. Anyone making use of this drawing does so at their own risk and assumes all liability for such use. Final design for construction purposes must be completed by a Registered Professional Engineer who is familiar with the product and who has taken into account specific site conditions.



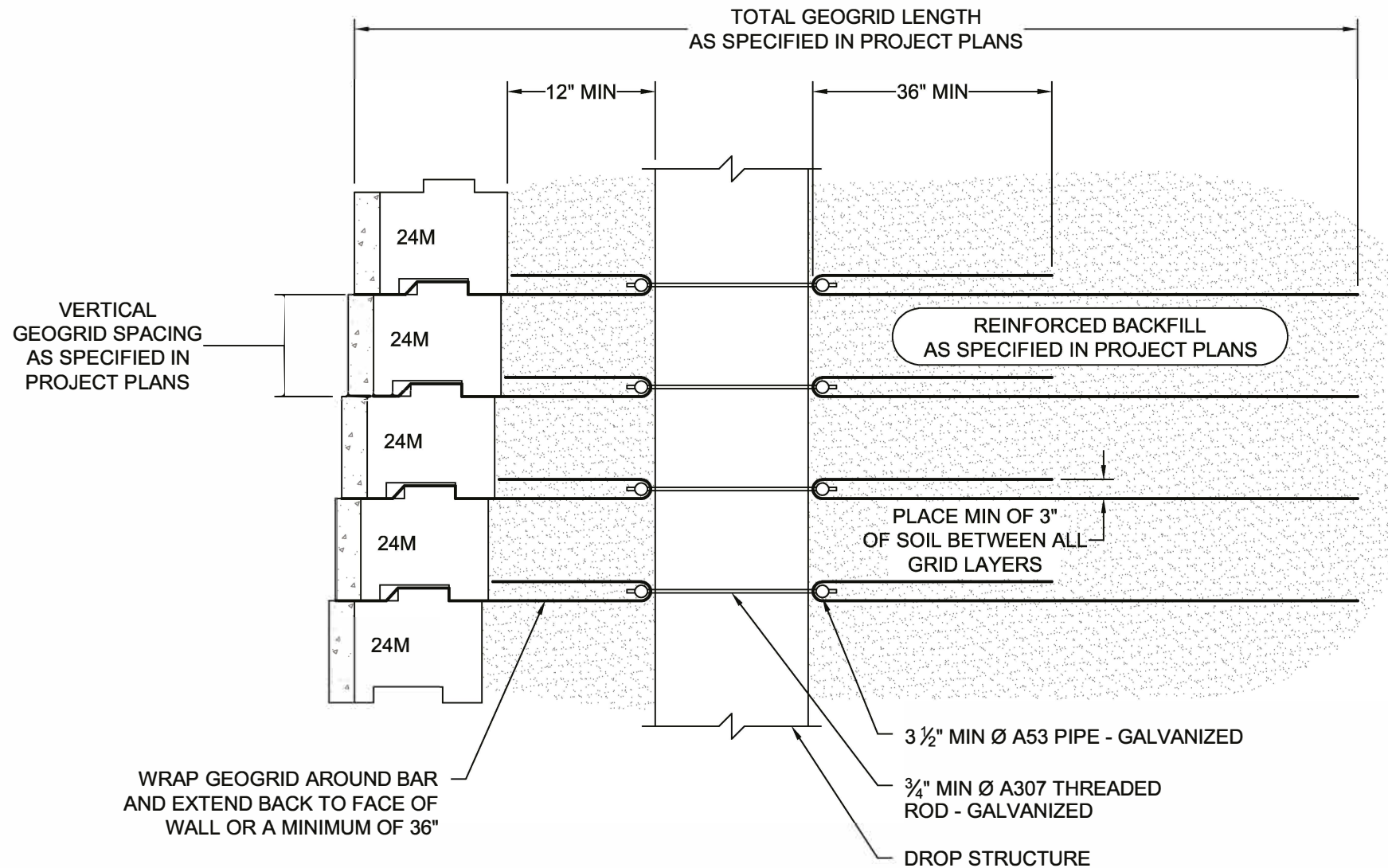
Retaining Walls by CBS Beton

**DRAWING #204**

**OBLIQUE OUTSIDE  
CORNER - SPECIAL**

ReCon Walls by CBS beton

Hooimeersstraat 8, 8710 Wielsbeke.  
t +32 (0)56 60 50 37 - F +32 (0) 56 61 75 39  
Info @reconwallsbycbsbeton.com



© Copyright 2016 ReCon Wall Systems, Inc. All Rights Reserved

Disclaimer: This drawing has been prepared by ReCon Wall Systems, Inc. and to the best of its knowledge, accurately represents the product use in the application that it is illustrated. This drawing is intended for conceptual purposes only. Anyone making use of this drawing does so at their own risk and assumes all liability for such use. Final design for construction purposes must be completed by a Registered Professional Engineer who is familiar with the product and who has taken into account specific site conditions.



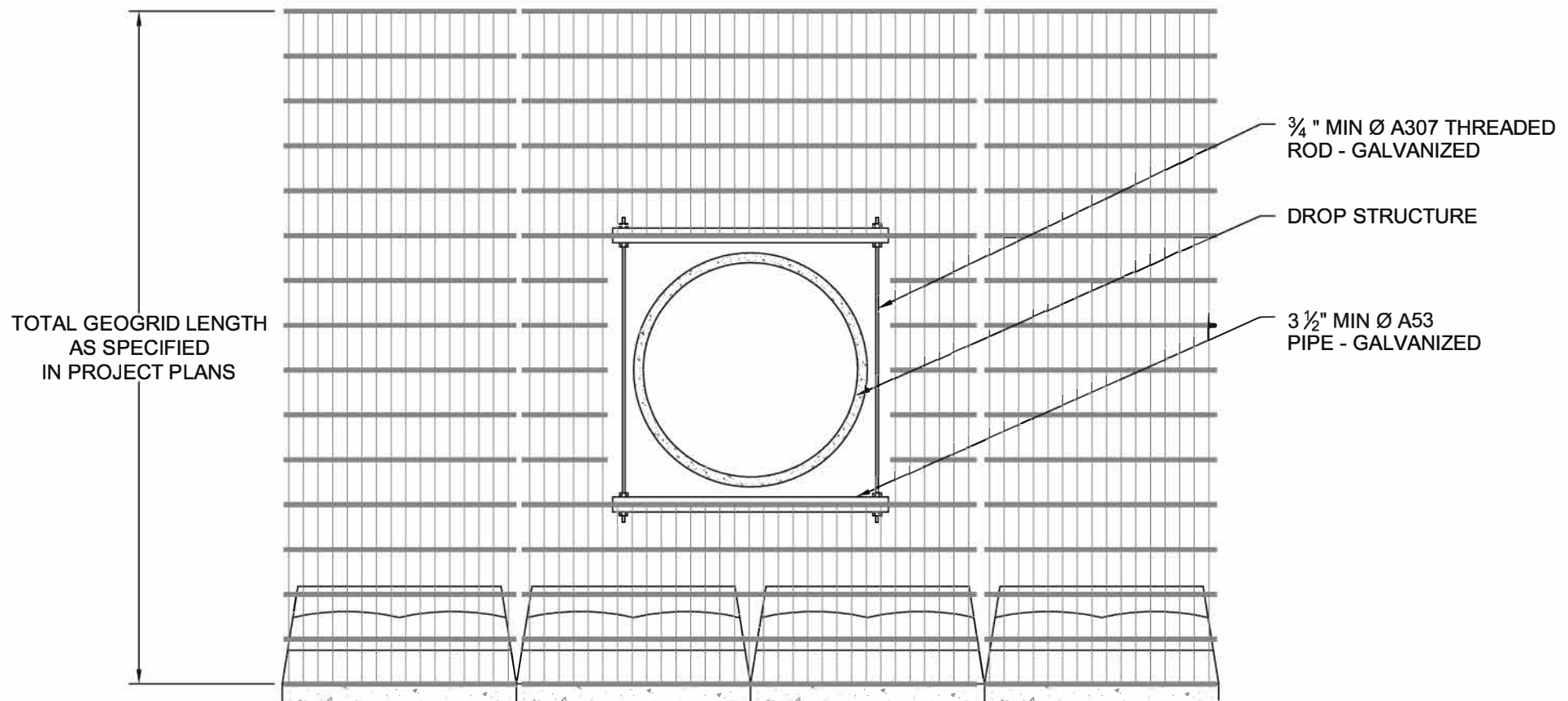
Retaining Walls by CBS Beton

**DRAWING #205**

## DROP STRUCTURE THROUGH GRID - SECTION VIEW

**ReCon Walls by CBS beton**

Hooimeersstraat 8, 8710 Wielsbeke.  
t +32 (0)56 60 50 37 - F +32 (0) 56 61 75 39  
Info @reconwallsbycbsbeton.com



© Copyright 2016 ReCon Wall Systems, Inc. All Rights Reserved

Disclaimer: This drawing has been prepared by ReCon Wall Systems, Inc. and to the best of its knowledge, accurately represents the product use in the application that it is illustrated. This drawing is intended for conceptual purposes only. Anyone making use of this drawing does so at their own risk and assumes all liability for such use. Final design for construction purposes must be completed by a Registered Professional Engineer who is familiar with the product and who has taken into account specific site conditions.



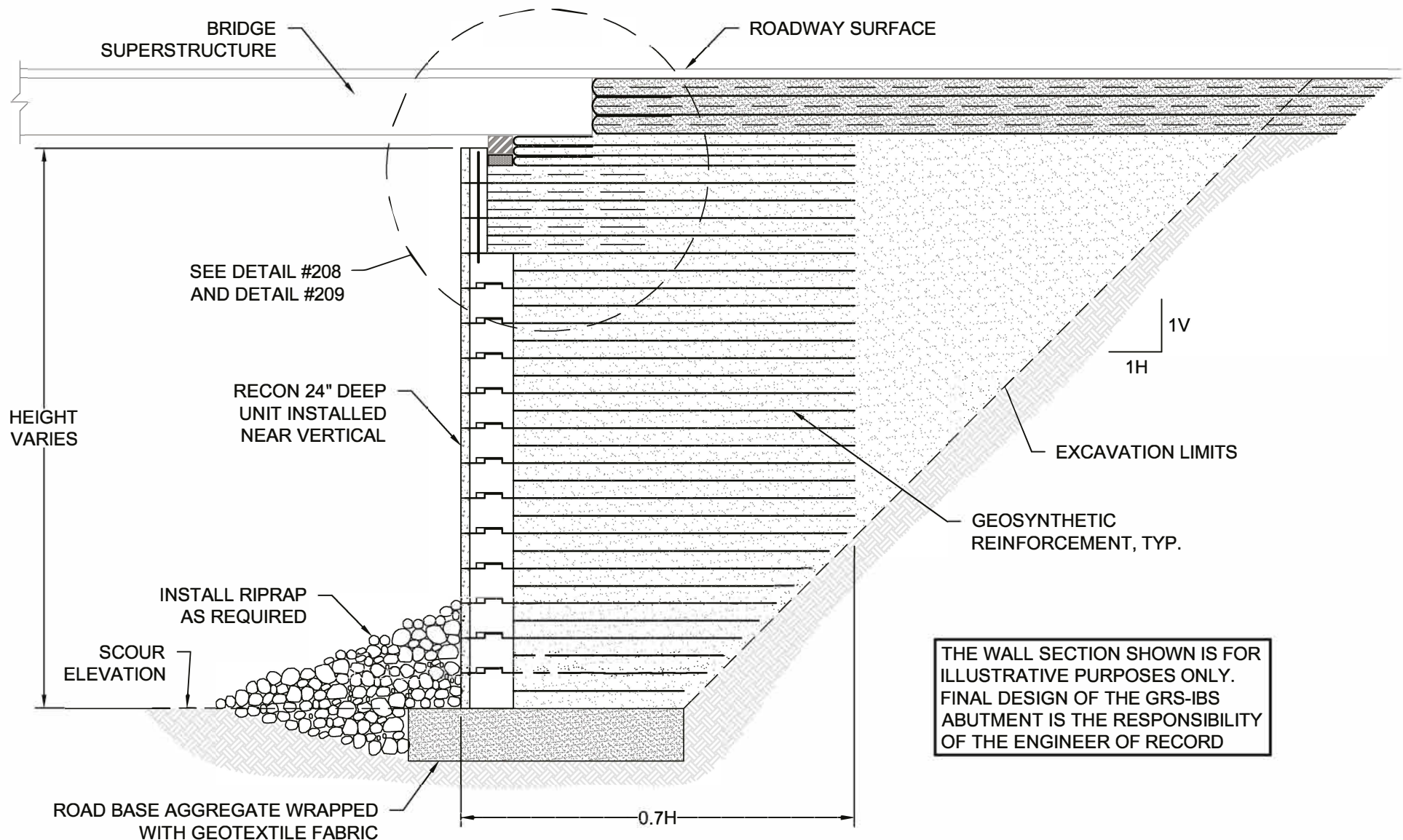
Retaining Walls by CBS Beton

**DRAWING #206**

## DROP STRUCTURE THROUGH GRID - PLAN VIEW

**ReCon Walls by CBS beton**

Hooimeersstraat 8, 8710 Wielsbeke.  
t +32 (0)56 60 50 37 - F +32 (0) 56 61 75 39  
Info @reconwallsbycbsbeton.com



© Copyright 2016 ReCon Wall Systems, Inc. All Rights Reserved

Disclaimer: This drawing has been prepared by ReCon Wall Systems, Inc. and to the best of its knowledge, accurately represents the product use in the application that it is illustrated. This drawing is intended for conceptual purposes only. Anyone making use of this drawing does so at their own risk and assumes all liability for such use. Final design for construction purposes must be completed by a Registered Professional Engineer who is familiar with the product and who has taken into account specific site conditions.



Retaining Walls by CBS Beton

**DRAWING #207**

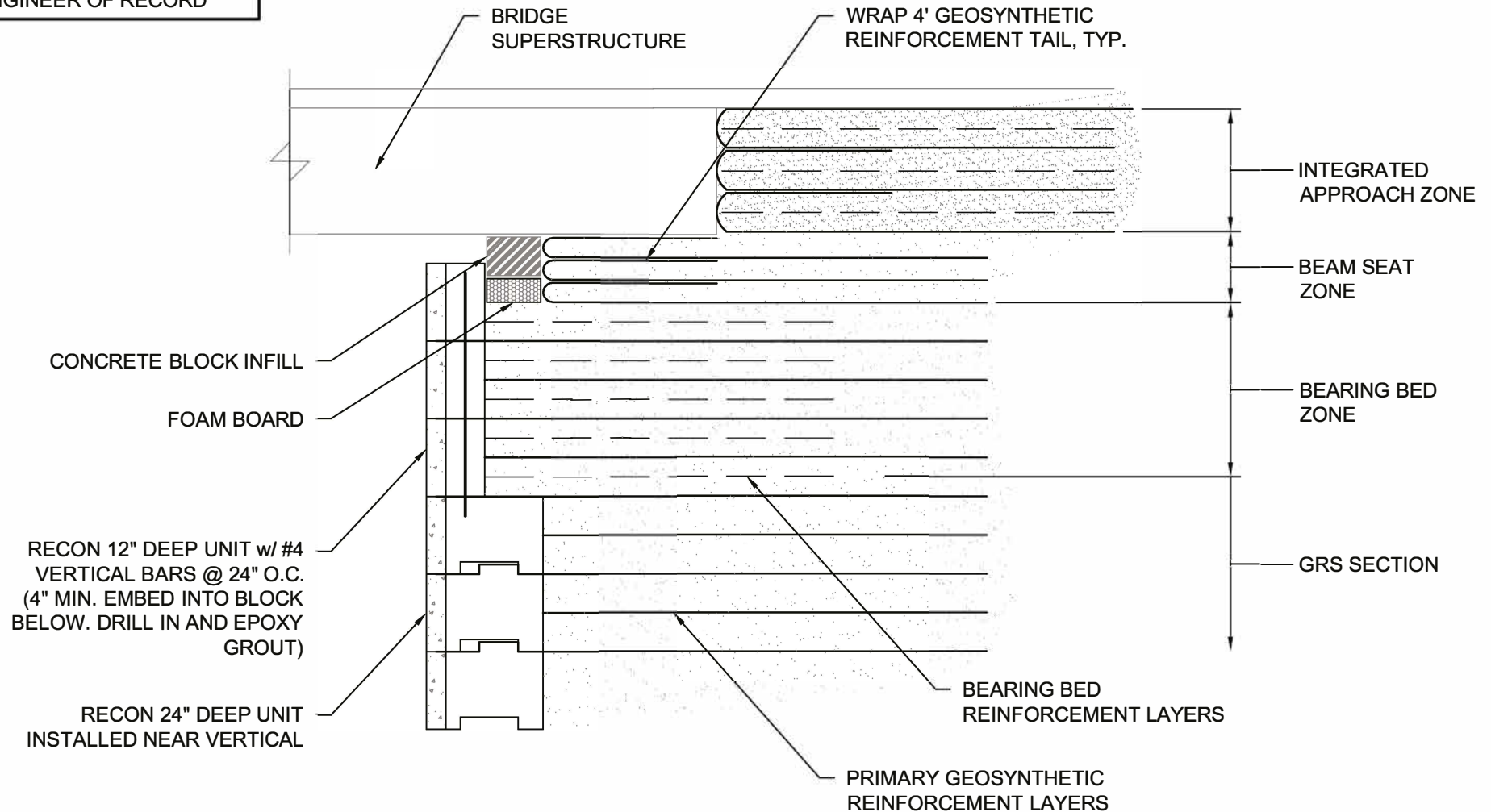
## GRS-IBS WALL SECTION

ReCon Walls by CBS beton

Hooimeersstraat 8, 8710 Wielsbeke.  
t +32 (0)56 60 50 37 - F +32 (0) 56 61 75 39  
Info @reconwallsbycbsbeton.com



THE WALL DETAIL SHOWN IS FOR ILLUSTRATIVE PURPOSES ONLY. FINAL DESIGN OF THE GRS-IBS ABUTMENT IS THE RESPONSIBILITY OF THE ENGINEER OF RECORD



© Copyright 2016 ReCon Wall Systems, Inc. All Rights Reserved

Disclaimer: This drawing has been prepared by ReCon Wall Systems, Inc. and to the best of its knowledge, accurately represents the product use in the application that it is illustrated. This drawing is intended for conceptual purposes only. Anyone making use of this drawing does so at their own risk and assumes all liability for such use. Final design for construction purposes must be completed by a Registered Professional Engineer who is familiar with the product and who has taken into account specific site conditions.



Retaining Walls by CBS Beton

**DRAWING #208**

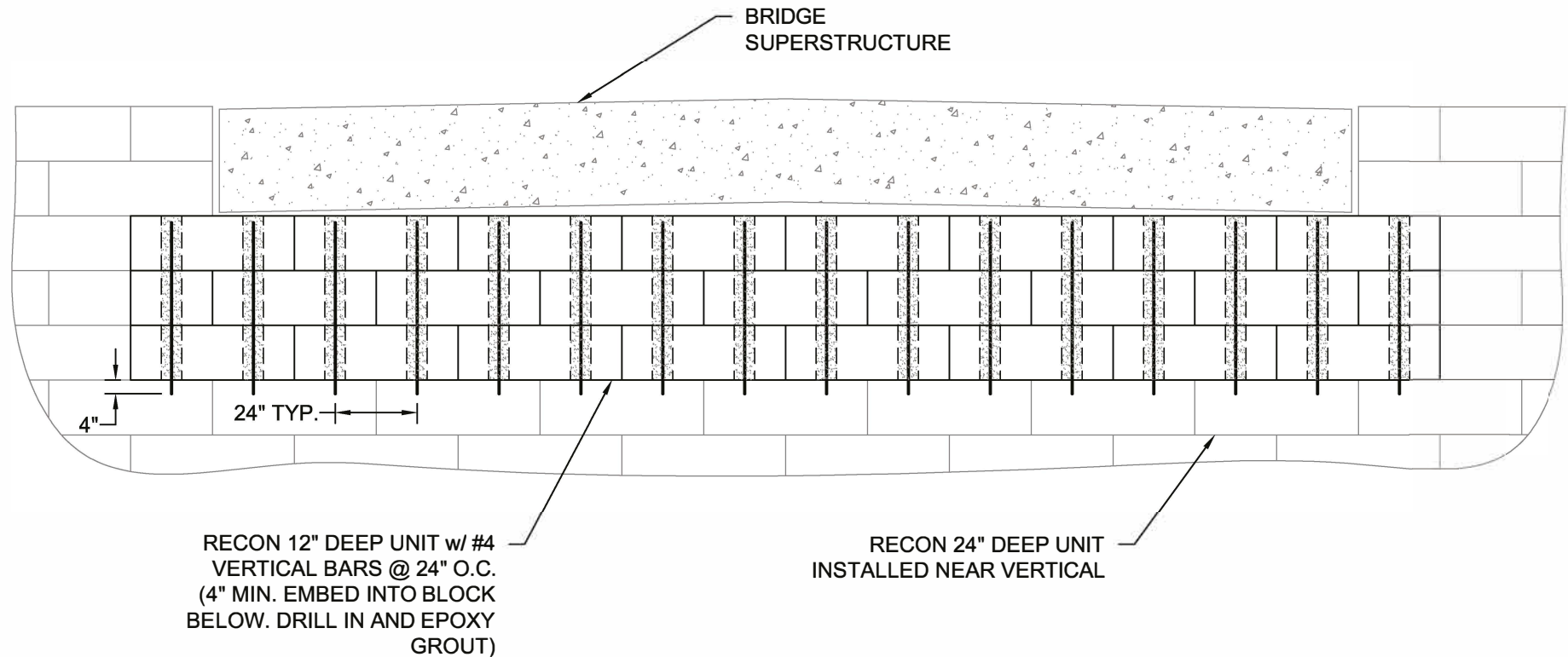
## GRS-IBS WALL SECTION DETAIL

**ReCon Walls by CBS beton**

Hooimeersstraat 8, 8710 Wielsbeke.  
t +32 (0)56 60 50 37 - F +32 (0) 56 61 75 39  
Info @reconwallsbycbsbeton.com



THE WALL DETAIL SHOWN IS FOR  
ILLUSTRATIVE PURPOSES ONLY.  
FINAL DESIGN OF THE GRS-IBS  
ABUTMENT IS THE RESPONSIBILITY  
OF THE ENGINEER OF RECORD



© Copyright 2016 ReCon Wall Systems, Inc. All Rights Reserved

Disclaimer: This drawing has been prepared by ReCon Wall Systems, Inc. and to the best of its knowledge, accurately represents the product use in the application that it is illustrated. This drawing is intended for conceptual purposes only. Anyone making use of this drawing does so at their own risk and assumes all liability for such use. Final design for construction purposes must be completed by a Registered Professional Engineer who is familiar with the product and who has taken into account specific site conditions.

**ReCon**<sup>TM</sup>  
Retaining Walls by CBS Beton

**DRAWING #209**

**GRS-IBS WALL  
PROFILE DETAIL**

**ReCon Walls by CBS beton**

Hooimeersstraat 8, 8710 Wielsbeke.  
t +32 (0)56 60 50 37 - F +32 (0) 56 61 75 39  
Info @reconwallsbycbsbeton.com